

Kyalami 345 MK2 - Designer

 4
  2
  2
  34 sq

Facade name: Kyoto MK2

House plan:



LOT #1046

Savana

Address: Brightvale Boulevard, Wyndham Vale, 3024



400 m²

House and land package price:

Fixed **\$658,247***

About package:

Fixed Site Cost*

Estate Covenants, Guidelines & Statutory Costs

6 Star energy rating* in any orientation

Colorbond panel lift garage door with remote control system

Undercover alfresco dining with waffle pod concrete slab

Colour on and sealed concrete to driveway, porch and front path

Complete flooring including carpet & timber laminate floorboards

Chef's kitchen including

- 900mm stainless steel appliances
- 20mm stone bench top in choice of colours
- Overhead cabinetry for additional storage

2590mm ceiling height

12 Month Price Hold included

Speak to one of our consultants for a full list of our quality inclusions

ENQUIRE NOW:

Laneda Boci • P: 0424153401 • E: laneda@bentleyhomes.com.au

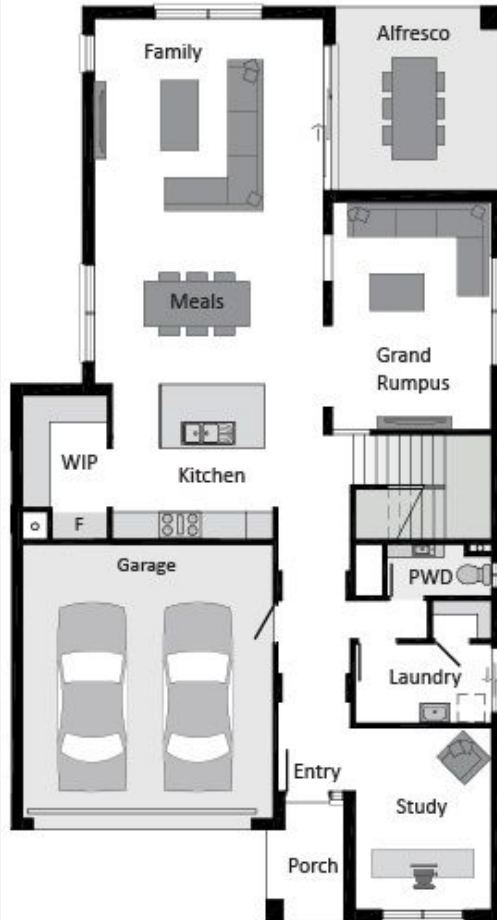
©Copyright. Reproduction without authorisation from Bentley Homes (Aust) Pty Ltd is prohibited. All images and plans are for illustrative purposes and should only be used as a guide only. Refer to the working drawings for complete dimensions. Based on standard home and builder's preferred siting. Excludes legal fees relating to building contract and excludes land acquisition charges. Bentley Homes (Aust) Pty Ltd reserves the right to alter prices & specification without notice. Land estate pricing and plans are subject to developer guidelines and may vary at any time.

House Features:

- ✓ BAL 12.5
- ✓ Overhead cabinetry to refrigerator space
- ✓ Complete flooring including carpet and timber laminate
- ✓ Standard Colour Range Colour-On and Sealed
- ✓ Council Cost (average cost)
- ✓ Developer Guidelines
- ✓ 20mm Caesarstone benchtop to Ensuite and Bathroom
- ✓ Flyscreens and window locks to all openable windows
- ✓ Multifunction stainless steel dishwasher
- ✓ Choice of Premium 900mm stainless steel appliances
- ✓ Tiled Shower Bases
- ✓ Boutique sliding / stacker doors to alfresco
- ✓ Joinery built Laundry fit out including 20mm stone
- ✓ 40mm Caesarstone waterfall ends to the Kitchen island
- ✓ Butler's pantry fit out including sink, mixer, over-

Estate Features:

- ✓ Our Lady of the Southern Cross Primary School
- ✓ Manor Lakes Central Shopping Centre
- ✓ Wyndham Vale Station,



ENQUIRE NOW:

Laneda Boci • P: 0424153401 • E: laneda@bentleyhomes.com.au

©Copyright. Reproduction without authorisation from Bentley Homes (Aust) Pty Ltd is prohibited. All images and plans are for illustrative purposes and should only be used as a guide only. Refer to the working drawings for complete dimensions. Based on standard home and builder's preferred siting. Excludes legal fees relating to building contract and excludes land acquisition charges. Bentley Homes (Aust) Pty Ltd reserves the right to alter prices & specification without notice. Land estate pricing and plans are subject to developer guidelines and may vary at any time.