



# ATLANTA290 MK2

Designed exclusively for the discerning individual our Atlanta 290 MK2 will take care of all your family and entertaining needs. Displaying a master bedroom with dual robes, large laundry with linen cupboard, and open plan dual living and dining spaces extending into a large Alfresco, this home has been designed to surpass your highest expectation.

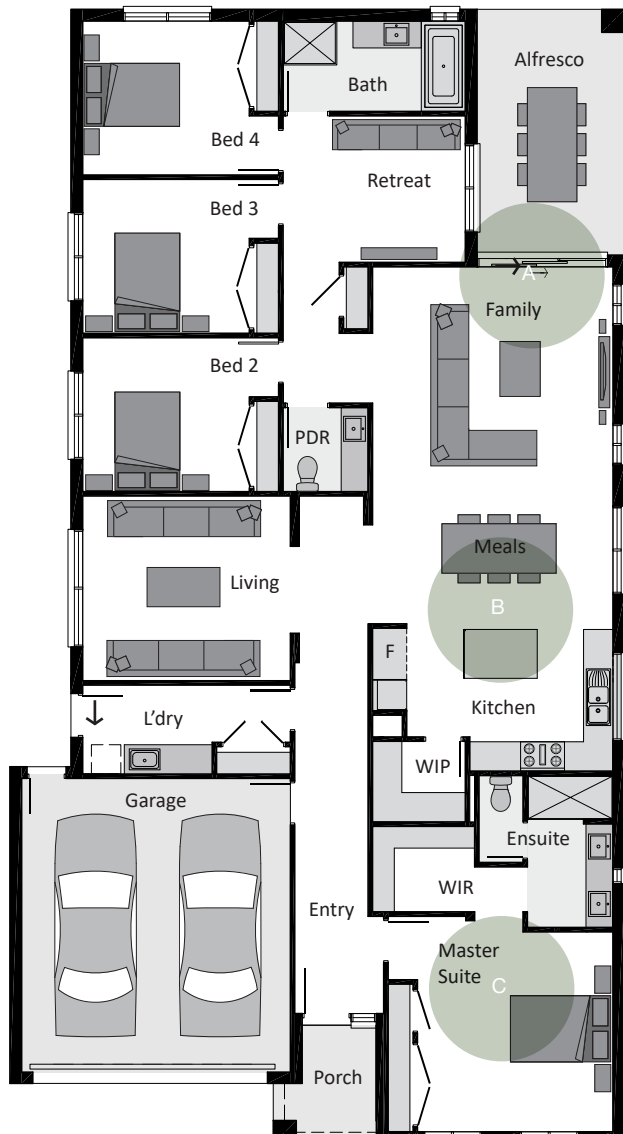
## Suitable for Lot 14m x 32m



<b>Total</b>	<b>265.96m<sup>2</sup></b>	<b>28.63sq</b>
Ground Floor	209.97m <sup>2</sup>	22.60sq
Garage	36.40m <sup>2</sup>	3.92sq
Porch	4.40m <sup>2</sup>	0.47sq
Alfresco	15.19m <sup>2</sup>	1.64sq

Overall Width	12.58m
Overall Length	23.21m
Suitable for Lot	14 x 32m

Master bed	4.41m x 4.00m
Bed 2	3.15m x 3.41m
Bed 3	3.15m x 3.41m
Bed 4	3.15m x 3.41m
Family/Meals	7.42m x 4.92m
Living	3.78m x 4.25m
Retreat	3.00m x 3.73m
Alfresco	5.03m x 3.02m



- A** Entertain all year round with dual open plan living and dining spaces seamlessly integrating with your Alfresco area
- B** Chef's kitchen delight complete with breakfast bar, extensive joinery and large WIP offering masses of storage
- C** Master bedroom with WIR and BIR for additional storage, ensuite featuring dual vanity basins, enclosed WC and oversized shower