



# MOSMAN240

Our Mosman 240 has been designed with the growing family in mind. The chef's kitchen with full walk in pantry and extensive cabinetry will take care of all of your entertaining needs. Combining 4 spacious bedrooms, living room, study nook, and well-appointed meals, family and alfresco, every family member will appreciate the space they need. At 24sq including features like these, you just can't go past the Mosman 240.

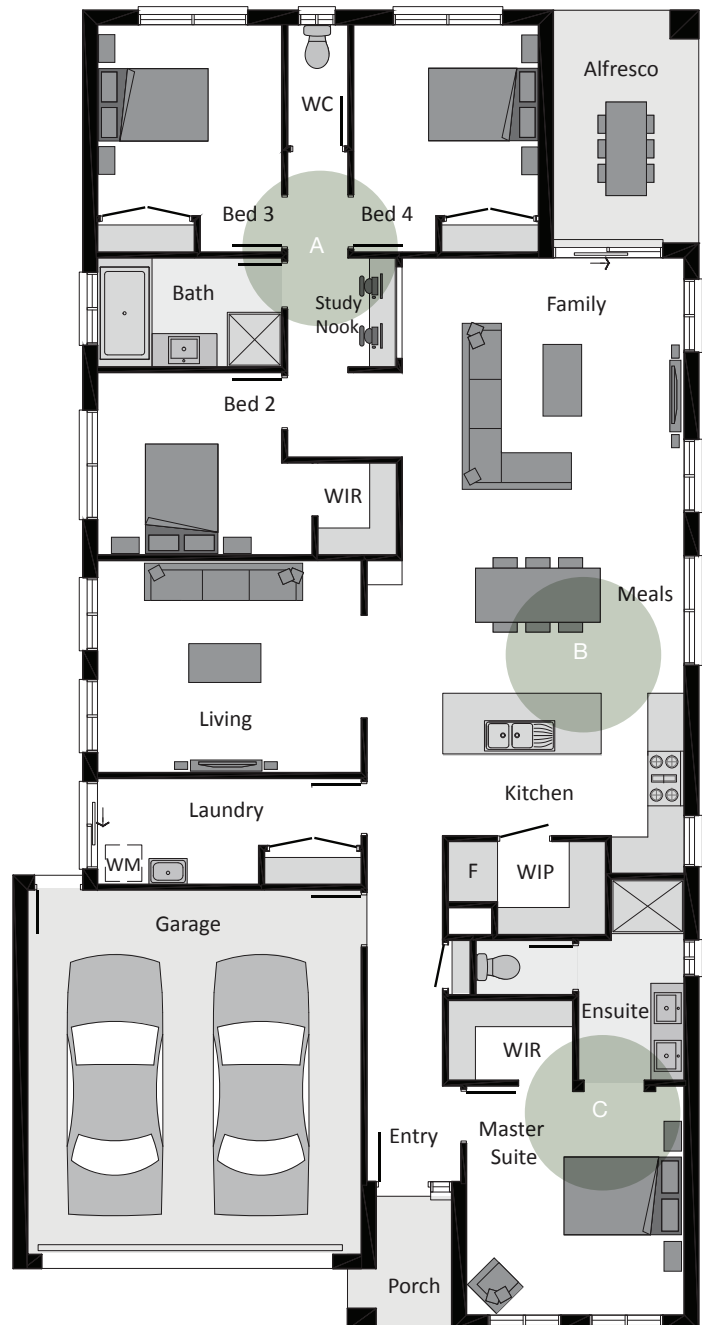
## Suitable for Lot 12.5m x 30m



Total	223.80m <sup>2</sup>	24.09sq
Ground Floor	175.00m <sup>2</sup>	18.84sq
Garage	36.37m <sup>2</sup>	3.91sq
Porch	3.22m <sup>2</sup>	0.35sq
Alfresco	9.21m <sup>2</sup>	0.99sq

Overall Width	11.30m
Overall Length	21.75m
Suitable for Lot	12.5m x 30m

Master bed	3.78m x 3.59m
Bedroom 2	3.01m x 3.54m
Bedroom 3	3.15m x 3.04m
Bedroom 4	3.15m x 3.05m
Family/Meals	7.18m x 4.65m
Living	3.46m x 4.35m



- A** Children's quarters with central study nook
- B** Chef's kitchen with panoramic views of meals, family and living room
- C** Master suite away from secondary bedrooms with resort style ensuite