



## RADISSON<sup>250</sup>

With a considerably sized family room which leads into the meals and alfresco areas, our Radisson 250 incorporates the perfect living areas for both family and entertaining.

Boasting a chic kitchen with larger bench-top space and superbly finished with a functional walk in pantry, the master suite positioned away from the front of the home boasting a spacious walk-in robe and ensuite, and bedroom three and four with walk in robes, this home provides both practicality and instant appeal from the moment you step inside.

### Suitable for Lot 14m x 28m

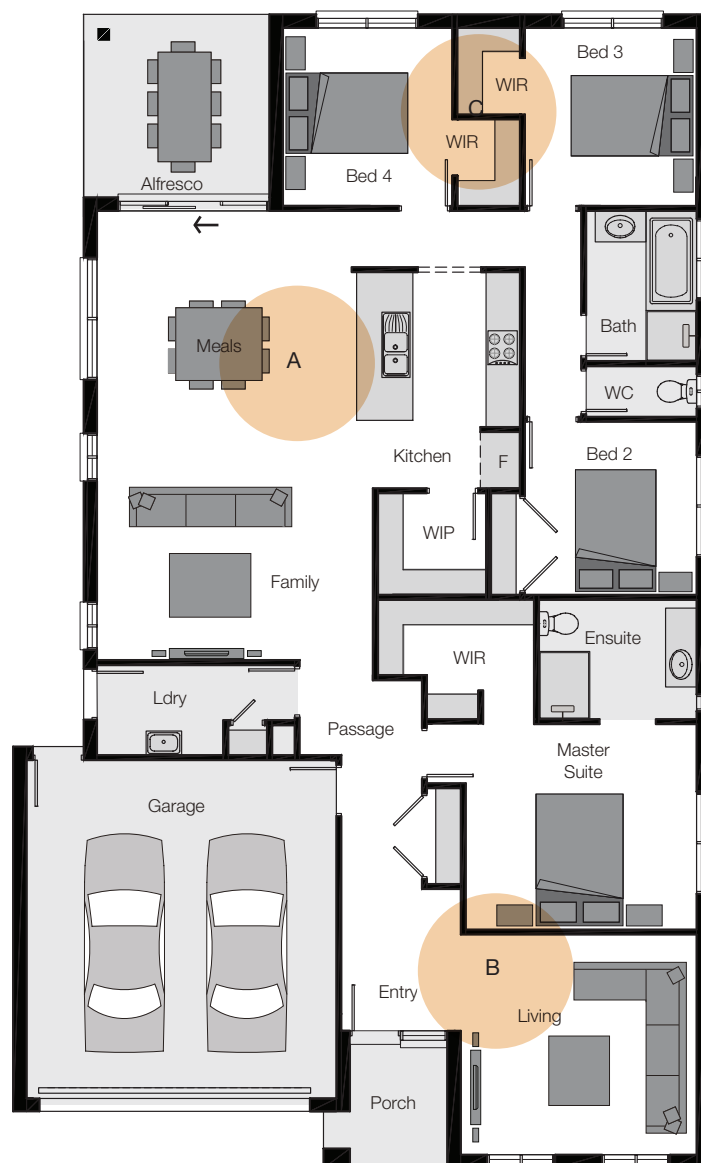


<b>Total</b>	<b>232.04m<sup>2</sup></b>	<b>24.98sq</b>
Ground floor	180.28m <sup>2</sup>	19.41sq
Garage	36.40m <sup>2</sup>	3.92sq
Porch	4.87m <sup>2</sup>	0.52sq
Alfresco	10.49m <sup>2</sup>	1.13sq

Overall Width	12.38m
Overall Length	20.50m
Suitable for Lot	14m x 28m

Master suite	3.65m x 4.10m
Bed 2	3.07m x 3.05m
Bed 3	3.16m x 3.01m
Bed 4	3.16m x 3.05m
Meals	3.01m x 4.25m
Family	4.97m x 4.90m
Living	3.91m x 4.91m
Alfresco	3.25m x 3.30m

On display at The Grove Display Centre, Tarnait



- A** Panoramic kitchen with walk in pantry overlooking central living zone
- B** Second living zone well away from the hub of the home
- C** Bedroom 3 and 4 with walk in robes providing plenty of storage space