



VARANO305 MK2

The feeling of a holiday every day comes alive with the Varano 305 MK2. We're confident you'll love the attention to detail in our design including an outdoor living area perfectly integrated into the layout, and expansive living zones, perfect for entertaining all year round. With four generous bedrooms, an opulent master suite with grand ensuite, and a kitchen that's superbly finished, the Varano 305 MK2 defines style for today's lifestyle.

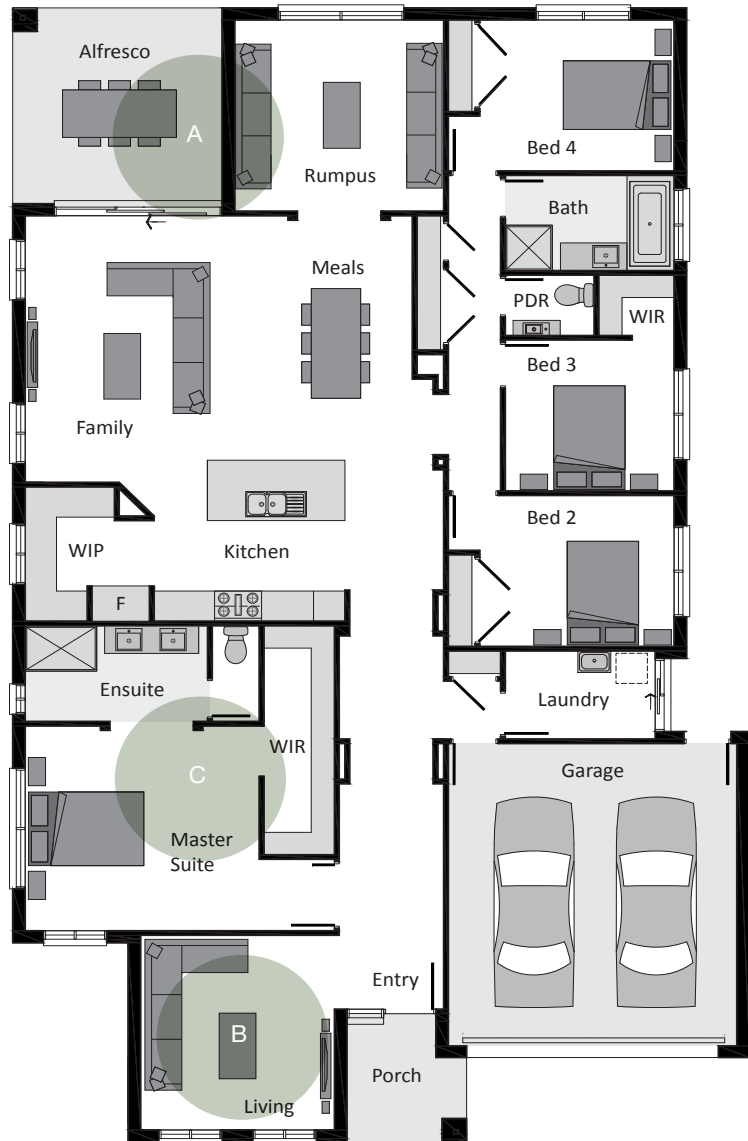
Suitable for lot 16m x 30m



Total	282.14m ²	30.37sq
House	225.00m ²	24.22sq
Garage	36.48m ²	3.93sq
Alfresco	15.59m ²	1.68sq
Porch	5.07m ²	0.55sq

Overall Width	14.10m
Overall Length	22.54m
Suitable for lot	16m x 30m

Master Suite	4.07m x 4.48m
Bedroom 2	3.00m x 3.72m
Bedroom 3	3.00m x 3.23m
Bedroom 4	3.00m x 3.72m
Living	3.87m x 3.71m
Meals	4.86m x 3.00m
Rumpus	3.80m x 4.00m
Family	5.30m x 4.41m
Alfresco	3.89m x 4.01m



- A** Alfresco zone adjoining the dual living, meals and kitchen perfect for entertaining
- B** Three living rooms with flexible floorplan options to suit all lifestyles
- C** An opulent master suite with large ensuite and walk in robe