

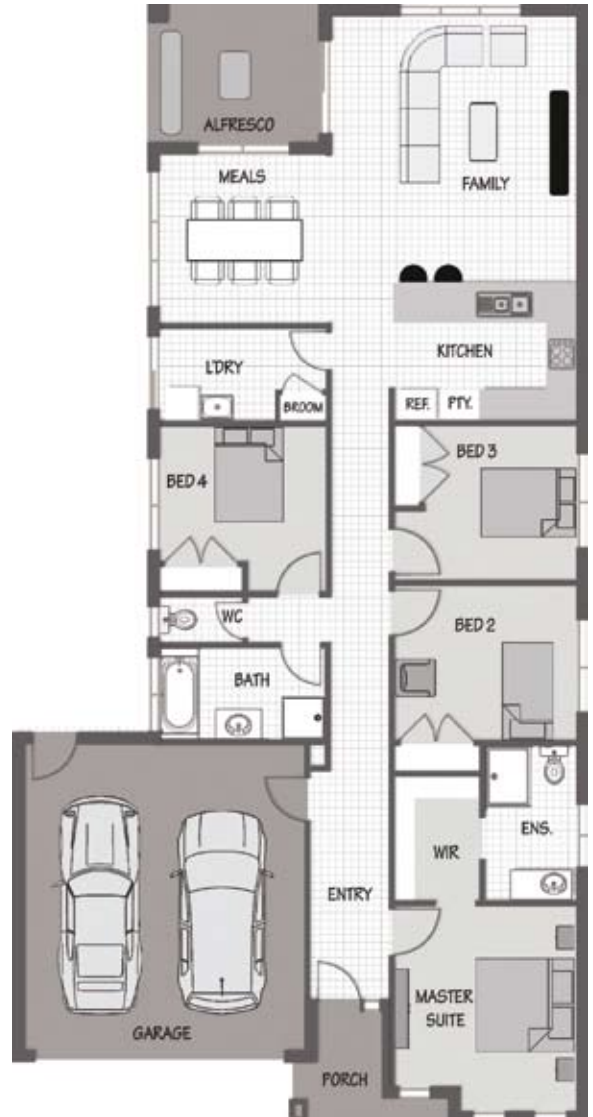
The over-size Kitchen, Family Room and Outdoor Living Areas are certainly the heart of this home. The Vision 22 incorporates all the features of a much larger home, but in a cleverly designed, more compact package, designed to suit a narrow 12.5m lot width. Enjoy gourmet cooking with your European appliances in the superbly finished, Kitchen Zone. With four generous bedrooms and genuine open-plan living, this contemporary design provides an exciting blend of space, style and comfort, with the added benefit of genuine indoor/outdoor living.



# vision22

Rooms	m
Master Suite	3.59 x 4.25
Bedroom 2	3.59 x 3.05
Bedroom 3	2.99 x 3.05
Bedroom 4	3.24 x 2.70
Meals	3.33 x 3.32
Family	4.83 x 5.16
Alfresco	3.33 x 2.70
Area Summary	m <sup>2</sup>
House	153.75 m <sup>2</sup>
Garage	36.74 m <sup>2</sup>
Porch	4.16 m <sup>2</sup>
Alfresco	8.99 m <sup>2</sup>
<b>Total</b>	<b>203.64 m<sup>2</sup></b>
Overall Width	11.30 m
Overall Length	21.96 m
<b>Suitable for a 12.5m Lot Width</b>	

**Stepped Construction System Compatible**



[www.bentleyhomes.com.au](http://www.bentleyhomes.com.au)

© Copyright. Reproduction without authorisation from Bentley Homes (Aust) Pty Ltd is prohibited. All images and plans are for illustrative purposes and should be used as a guide only. Refer to the working drawings for complete dimensions. Bentley Homes (Aust) Pty Ltd reserve the right to alter this plan without notice. Prices and Specifications subject to change without notice. Registered Builder DBU25604.

effective\_may\_2010

